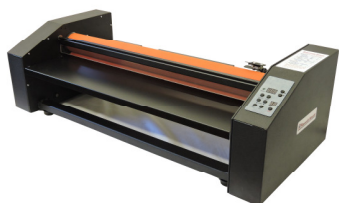


Smooth Mount LAMINATORS

27"/40"/50" Pouch Board Laminators

Simply Superior Design

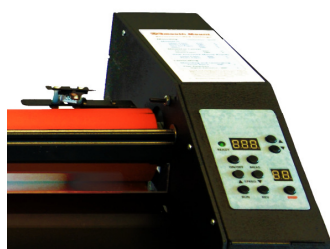
For improved productivity and ease of use



Automatic Silicon Rollers



Rear Extension Legs



Digital Controls

- **Rear Table Extension Legs improve Results and Productivity**
Boards exit unattended and safely cool flat (Patent pending)
Attach securely in seconds without tools
Store under laminator to save space when not in use
- **Variable Temperature and Speed**
Use with all pouch boards, mount boards, and cold boards
Reference guide on laminator for common applications
Speeds from one to five feet per minute
Temperatures from cold to 300°F
- **Spring Controlled Roller adjusts to Board Thickness**
Works automatically with boards up to 1/4" thick
Roller is silicon coated for easy cleaning
- **Digital Controls and Sensor**
Touchless infrared sensor monitors roll surface temperature
Digital display for both set and actual temperature
- **Safety Features**
Clear Safety Shield lets you view your work being processed
Fuses and adjustments accessed on the surface of the laminator
- **Uses standard 110V AC power**



Finished Board on Extensions



Videos

Specifications	27" Model	40" Model	50" Model
Dimensions	35"x15"x10"	48"x15"x10"	58"x15"x10"
Weight (net)	65 pounds	80 pounds	140 pounds
(shipping)	70 pounds	125 pounds	200 pounds
Roller Width	28" wide	41" wide	51" wide
Roller Diameter	2.5"	2.5"	3"
Power Requirement	110V / 12amp	110V / 12 amp	110V / 17 amp
Ships Via	UPS/FedEx	Truck	Truck
Item Number	PBML2725	PBML4025	PBML5030

Easy to Use



Place print in MountCor Board,
Pouch Board or Film Sheets



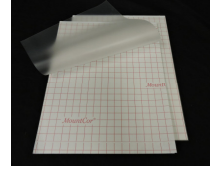
Insert board into the
Smooth Mount Laminator



Print exits the Laminator
Finished and ready to display

Together for Fast, Durable and Professional Results

- **Smooth Results** MountCor's breathable surface insures bubble-free mounts every time
- **Fast** At 275°F in Smooth Mount, MountCor adheres at 5 feet per minute
- **Professional** MountCor's denser core resists bowing and cuts cleanly
- **Safe** MountCor adhesive activates at a low 130°F
- **Canvas** MountCor Canvas is the only heat adhesive to permanently bond canvas prints
- **Versatile** MountCor adheres to more types of paper than standard heat-activated adhesives

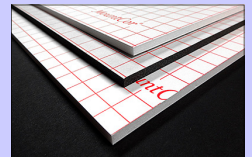


MountCor Features

- High density 3/16" thick rigid foam board
- Every board has its own non-stick cover sheet
- Adhesive is acid free and pH neutral



Size	White MountCor	Black MountCor	MountCor Canvas
24" x 36"	940009-MC	940009-BLK	940009-CAN
32" x 40"	940000-MC	940000-BLK	_____
40" x 60"	940006-MC	940006-BLK	940006-CAN
48" x 96"	940038-MC	940038-BLK	_____



White MountCor Pouch Boards (10/box)

Size	Gloss	Crystal Matte	Smooth Matte
18.5" x 25"	C18W-MC	M18W-MC	62318LMC
25" x 37"	C25W-MC	M25W-MC	62310LMC
36" x 48"	C36W-MC	M36W-MC	62311LMC
40" x 60"	C40W-MC	M40W-MC	62312LMC



Video

Smooth Mount and MountCor Return on Investment

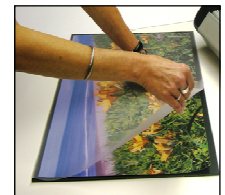
The Market prices for Mounting and Laminating

- Encapsulating (2 sided laminating) \$4/square foot
- Mounting (white foam board) \$5/square foot
- Mounting and Laminating (Foam Board/Gloss) \$7/square foot

Note: Black foam board and matte laminate have higher prices

Prices based on Northeast market, single-tem purchases

The average pricing mark-up is 4 times material cost



The Payback Calculation

1. Assume you sell 1 24"x36" print a day at \$30 each.
Total revenue \$150/week with a cost of supplies & labor is \$40
Yielding a weekly profit of \$110
2. If your equipment cost is \$2,000 you will get your money back or **Payback in 18 weeks** (\$2,000/\$110) or less than 100 mounts pays for your system.

